

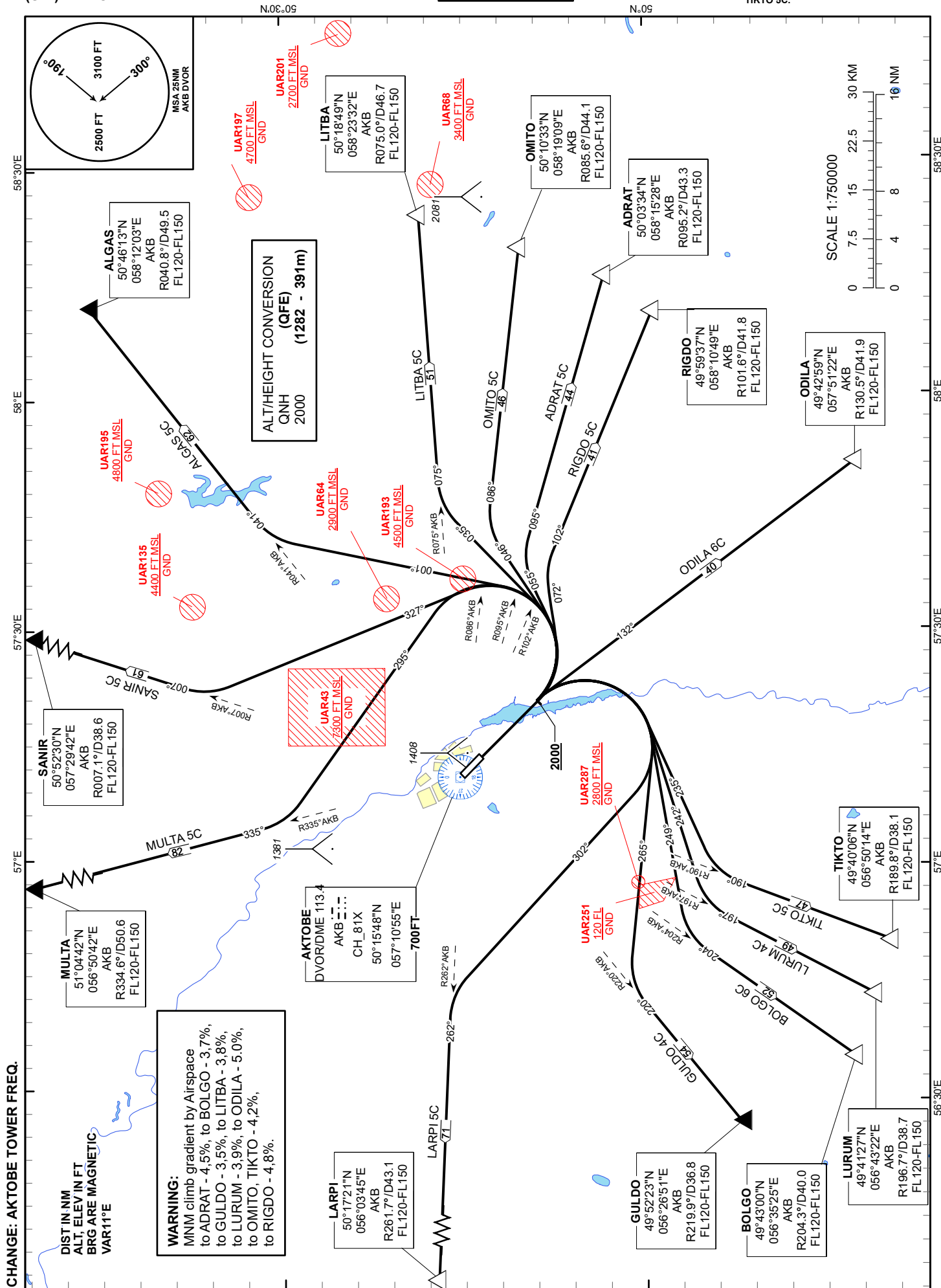
STANDARD DEPARTURE
CHART - INSTRUMENT
(SID) - ICAO

TRANSITION ALTITUDE
10000 FT

AKTOBE TOWER 128.0
AKTOBE ATIS (EN) 126.0
AKTOBE ATIS (RU) 127.80

AD RAT 5C, ALGAS 5C, BOLGO 6C,
GULDO 4C, LARPI 5C, LITBA 5C,
LURUM 4C, MULTA 5C, ODILA 6C,
OMITO 5C, RIGDO 5C, SANIR 5C,
TIKTO 5C.

AKTOBE
RWY 12



STANDARD DEPARTURE ROUTES – INSTRUMENT (SID) AKTOBE RWY 12
MULTA 5C After take-off climb straight ahead to 2000 FT or above, turn LEFT on track 295°, until intercept R335° AKB, then proceed to MULTA (R334.6° D50.6 AKB). Cross MULTA at FL120-FL150
SANIR 5C After take-off climb straight ahead to 2000 FT or above, turn LEFT on track 327°, until intercept R007° AKB, then proceed to SANIR (R007.1° D38.6 AKB). Cross SANIR at FL120-FL150
ALGAS 5C After take-off climb straight ahead to 2000 FT or above, turn LEFT on track 001°, until intercept R041° AKB, then proceed to ALGAS (R040.8° D49.5 AKB). Cross ALGAS at FL120-FL150
LITBA 5C After take-off climb straight ahead to 2000 FT or above, turn LEFT on track 035°, until intercept R075° AKB, then proceed to LITBA (R075.0° D46.7 AKB). Cross LITBA at FL120-FL150
OMITO 5C After take-off climb straight ahead to 2000 FT or above, turn LEFT on track 046°, until intercept R086° AKB, then proceed to OMITO (R085.6° D44.1 AKB). Cross OMITO at FL120-FL150
ADRAT 5C After take-off climb straight ahead to 2000 FT or above, turn LEFT on track 055°, until intercept R095° AKB, then proceed to ADRAT (R095.2° D43.3 AKB). Cross ADRAT at FL120-FL150
RIGDO 5C After take-off climb straight ahead to 2000 FT or above, turn LEFT on track 072°, until intercept R102° AKB, then proceed to RIGDO (R101.6° D41.8 AKB). Cross RIGDO at FL120-FL150
ODILA 6C After take-off climb straight ahead to 2000 FT or above, turn RIGHT on track 132°, then proceed to ODILA (R130.5° D41.9 AKB). Cross ODILA at FL120-FL150
TIKTO 5C After take-off climb straight ahead to 2000 FT or above, turn RIGHT on track 235°, until intercept R190° AKB, then proceed to TIKTO (R189.8° D38.1 AKB). Cross TIKTO at FL120-FL150
LURUM 4C After take-off climb straight ahead to 2000 FT or above, turn RIGHT on track 242°, until intercept R197° AKB, then proceed to LURUM (R196.7° D38.7 AKB). Cross LURUM at FL120-FL150
BOLGO 6C After take-off climb straight ahead to 2000 FT or above, turn RIGHT on track 249°, until intercept R204° AKB, then proceed to BOLGO (R204.3° D40.0 AKB). Cross BOLGO at FL120-FL150
GULDO 4C After take-off climb straight ahead to 2000 FT or above, turn RIGHT on track 265°, until intercept R220° AKB, then proceed to GULDO (R219.9° D36.8 AKB). Cross GULDO at FL120-FL150
LARPI 5C After take-off climb straight ahead to 2000 FT or above, turn RIGHT on track 302°, until intercept R262° AKB, then proceed to LARPI (R261.7° D43.1 AKB). Cross LARPI at FL120-FL150